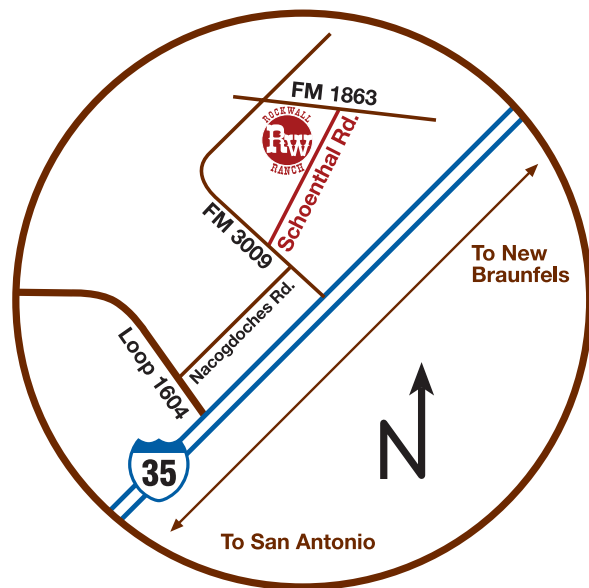




FEATURE HIGHLIGHTS

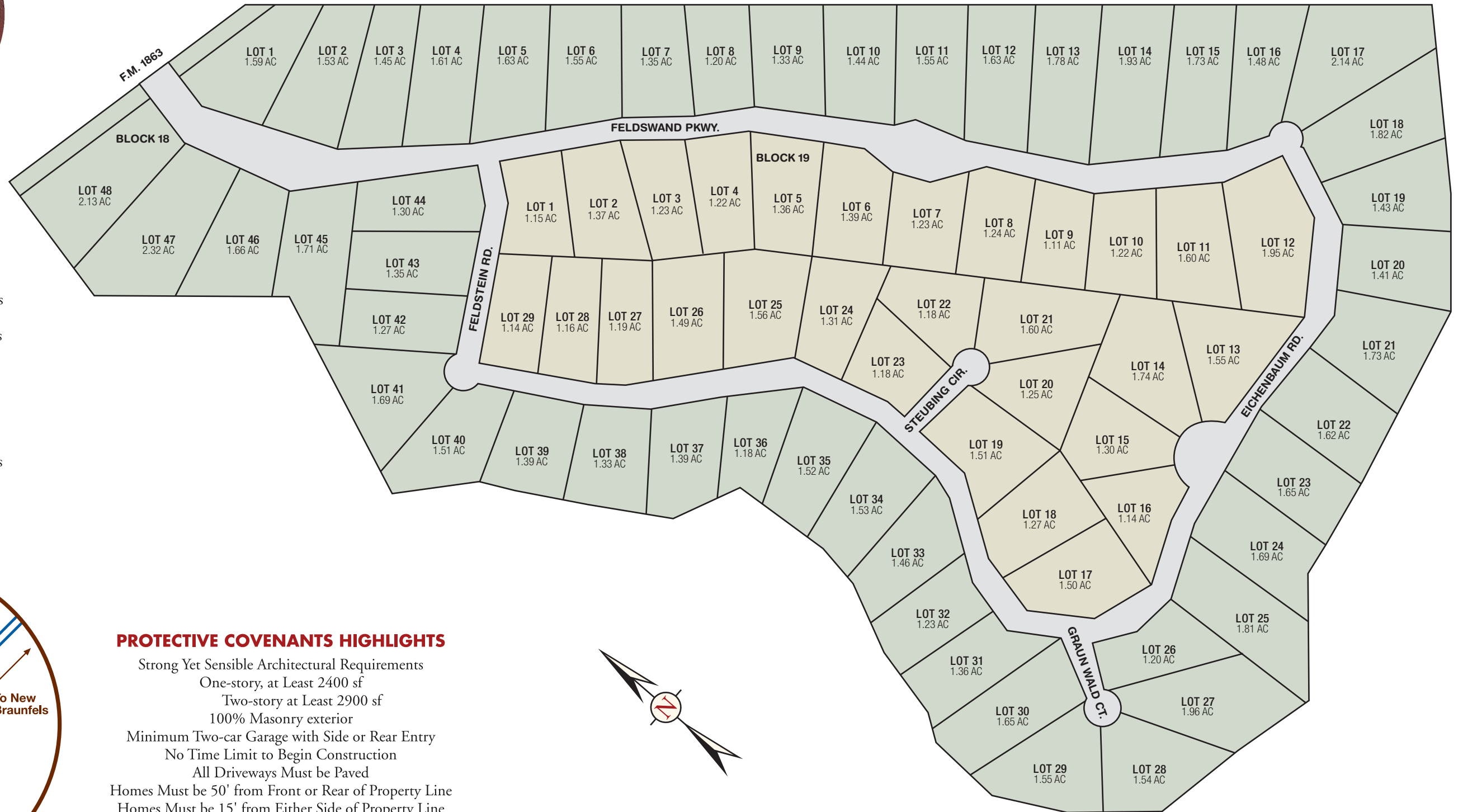
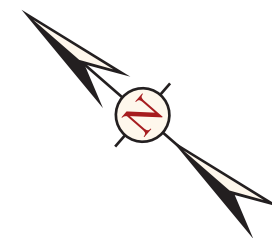
- Secluded 1 - 3 Acre Home Sites
- All Underground Utilities
- CPS Electric
- GVTC Metro Phone Lines
- Digital Cable T. V.
- Hi-Speed Internet Services
- Home Security Service
- State Approved Water System
- Paved and Curbed Streets
- Gated Entry
- Quality Deed Restrictions
- Abundant Mature Oak Trees
- Highly Acclaimed Comal Schools
- Excellent Financing

LOCATION



PROTECTIVE COVENANTS HIGHLIGHTS

- Strong Yet Sensible Architectural Requirements
 - One-story, at Least 2400 sf
 - Two-story at Least 2900 sf
 - 100% Masonry exterior
- Minimum Two-car Garage with Side or Rear Entry
- No Time Limit to Begin Construction
- All Driveways Must be Paved
- Homes Must be 50' from Front or Rear of Property Line
- Homes Must be 15' from Either Side of Property Line



Unit 5

...A True Hill Country Treasure